



TECHNICAL DATA

InstaSeal® WELDED SPRINKLER FITTINGS MODEL IS-W2 1"

The Viking Corporation, 210 N Industrial Park Drive, Hastings MI 49058

Telephone: 269-945-9501 Technical Services: 877-384-5464 Fax: 269-818-1680 Email: techsvcs@vikingcorp.com

Visit the Viking website for the latest edition of this technical data page www.vikinggroupinc.com

1. DESCRIPTION

The Viking InstaSeal® welded sprinkler fittings are designed to allow hand-tightening of threaded sprinklers. The gasket seals the connection upon sprinkler installation and eliminates the need for additional sealants (PTFE tape or thread sealant) typically used for sprinkler installation.

2. LISTINGS AND APPROVALS



cULus Listed: EX28508



FM Approved: Class 1920

3. TECHNICAL DATA

Available since 2023

Materials of Construction:

Fitting: ASTM A106

Gasket: EPDM Rubber

Wrench: Nylon reinforced plastic

Cap: LDPE

Pressure rating: 175 psi (12 bar)



WARNING: Cancer and Reproductive Harm-
www.P65Warnings.ca.gov

Ordering Information

Viking InstaSeal® fittings are pre-fabricated and welded onto the pipe. Please contact Viking SupplyNet for more information. These are custom order products and can not be returned or refunded.

Ordering Information	
Available sizes (Outlet size x pipe size)	1" NPT x 2" — 2.5" 1" NPT x 2.5" — 3"
Available pipe types	Schedule 10, 30, and 40
Pipe manufacturers	Bull Moose Eddy Flow and Wheatland MegaFlow
Gasket and tool kit	25022 Includes 1" and 3/4" tool sets, 1" gaskets, 3/4" gaskets, 1 gasket removal tool, and 1 plastic sprinkler wrench (for use with 3/4" and 1" sprinklers, refer to Figure 2)
1" Replacement gaskets	25712M
1" Pipe adapter bushing	24551 (refer to Figure 3)
Plastic sprinkler wrench	24838 (for use with 3/4" and 1" sprinklers, refer to Figure 2)



TECHNICAL DATA

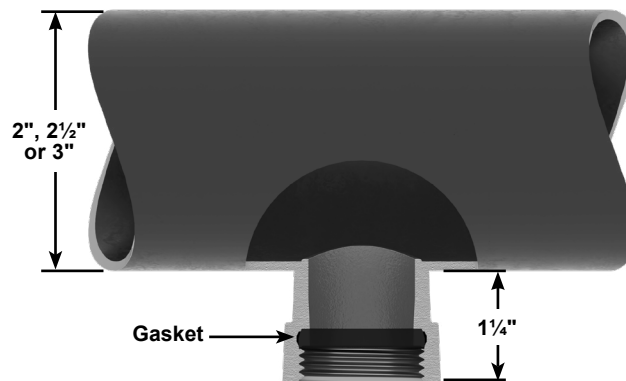
**InstaSeal®
WELDED SPRINKLER FITTINGS
MODEL IS-W2 1"**

The Viking Corporation, 210 N Industrial Park Drive, Hastings MI 49058
 Telephone: 269-945-9501 Technical Services: 877-384-5464 Fax: 269-818-1680 Email: techsvcs@vikingcorp.com
 Visit the Viking website for the latest edition of this technical data page www.vikinggroupinc.com



MARKINGS	
Model	VK IS-W2
Date of manufacture	[mm/yyyy]
Outlet size X pipe size range	1" X 2" - 2.5" 1" X 2.5" - 3"
Maximum pressure rating	175 PSI (12 BAR)

**Dimensions are approximate.*



NOTICE:

Install ONLY 1" NPT threaded sprinklers directly into the fitting.

**The 1" NPT pipe adapter bushing must be installed before installing any threaded 1" NPT pipe or other devices.
 Refer to Figure 3.**

Figure 1: Markings and Dimensions



TECHNICAL DATA

**InstaSeal®
WELDED SPRINKLER FITTINGS
MODEL IS-W2 1"**

The Viking Corporation, 210 N Industrial Park Drive, Hastings MI 49058
Telephone: 269-945-9501 Technical Services: 877-384-5464 Fax: 269-818-1680 Email: techsvcs@vikingcorp.com
Visit the Viking website for the latest edition of this technical data page www.vikinggroupinc.com

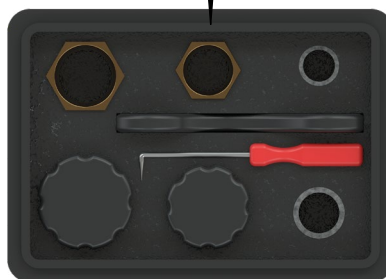
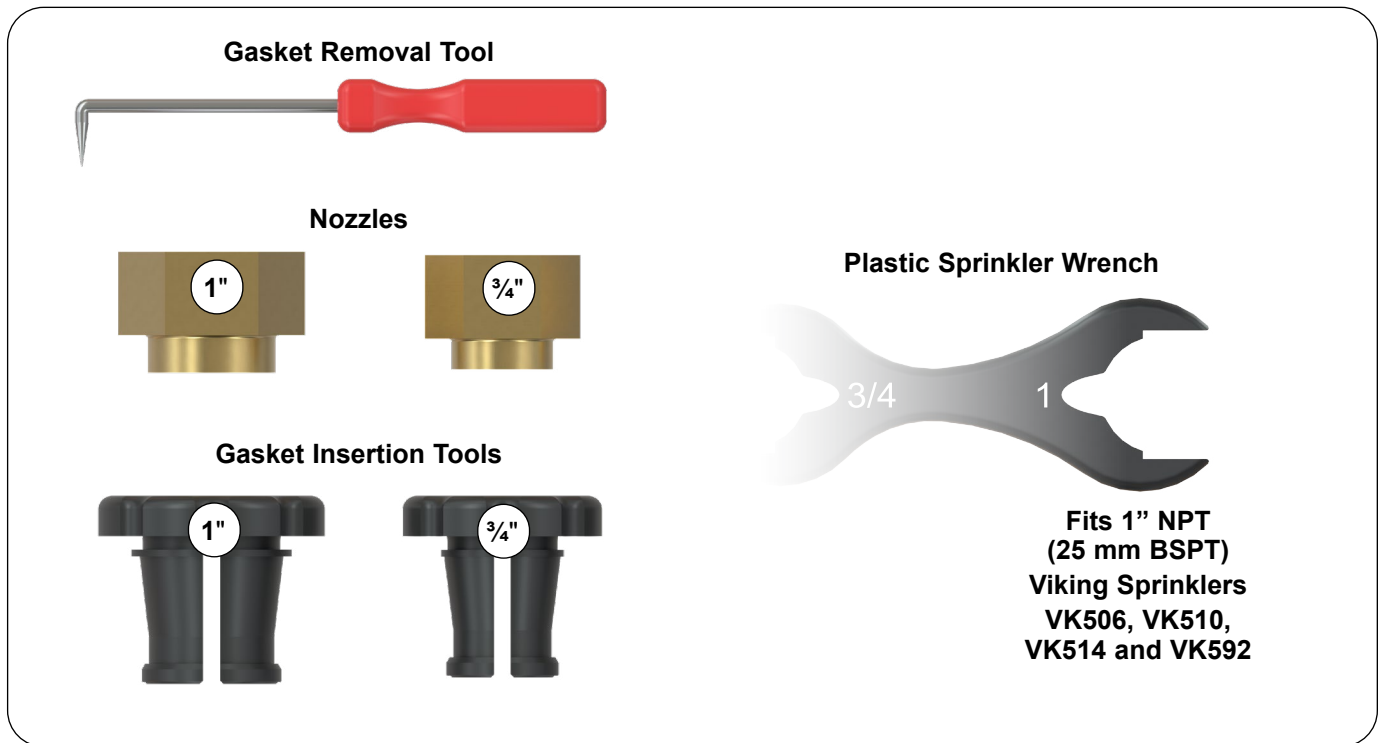


Figure 2: Gasket and Tool Kit

**TECHNICAL DATA****InstaSeal®
WELDED SPRINKLER FITTINGS
MODEL IS-W2 1"**

The Viking Corporation, 210 N Industrial Park Drive, Hastings MI 49058

Telephone: 269-945-9501 Technical Services: 877-384-5464 Fax: 269-818-1680 Email: techsvcs@vikingcorp.com

Visit the Viking website for the latest edition of this technical data page www.vikinggroupinc.com

NOTICE: Installing any device that is not a Viking sprinkler into the IS-W2 fitting may cause leaks. Prior to installing devices other than sprinklers, install the pipe adapter bushing as shown below.

Prior to installing any pipe or device that is not a sprinkler:

1. Thread the pipe adapter bushing into the fitting.
2. Tighten the pipe adapter bushing completely using a pipe wrench.
3. Connections made into the adapter bushing after installation into the IS-W2 will still require normal end preparation (for example, PTFE tape).

Adapter Bushing 24551

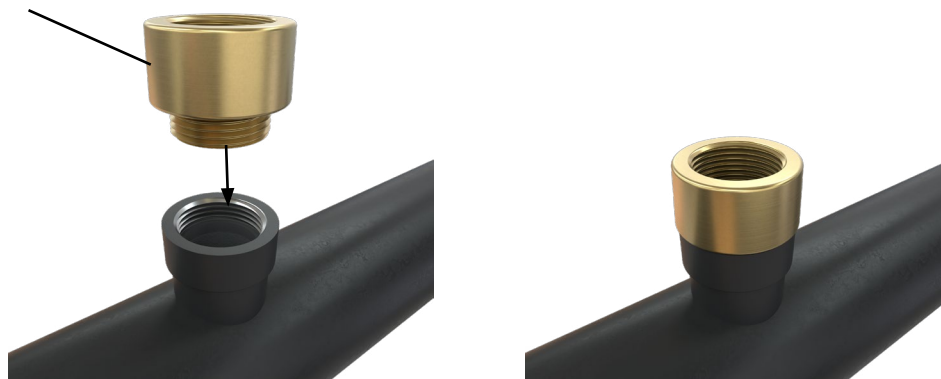


Figure 3: Pipe Adpater Bushing Installation



TECHNICAL DATA

InstaSeal®
WELDED SPRINKLER FITTINGS
MODEL IS-W2 1"

The Viking Corporation, 210 N Industrial Park Drive, Hastings MI 49058

Telephone: 269-945-9501 Technical Services: 877-384-5464 Fax: 269-818-1680 Email: techsvcs@vikingcorp.com

Visit the Viking website for the latest edition of this technical data page www.vikinggroupinc.com

4. INSTALLATION

Refer to appropriate NFPA, FM Global, and/or any other applicable installation standards. Also refer to the sprinkler's technical data sheet for information regarding installation of the sprinkler.

NOTICE

Over-tightening the sprinkler will deform the gasket and cause leaks.

- Do not tighten the sprinkler more than 360 degrees (1 full turn) from initial gasket contact.
- Install the sprinkler by hand or by using the InstaSeal® wrench.
- **DO NOT USE THE SPRINKLER'S STANDARD METAL INSTALLATION WRENCH.**
- Do not exceed the maximum torque specified for the sprinkler. Refer to the sprinkler's technical data.

Seating the Sprinkler

1. Remove the integrity protective cap from the IS-W2 fitting.

NOTE: DO NOT COMPRESS THE GASKET DURING THE FOLLOWING STEPS.

2. Slowly and gently thread the sprinkler into the fitting by hand until you feel resistance (indicates gasket contact).
3. Take note of the position of the sprinkler's frame arms before proceeding.

Compressing the Gasket

4. Tighten the sprinkler 180 degrees (1/2 turn) for gasket seal. **Minimum recommended torque is approximately 3 ft-lbs.**

NOTE: THE PLASTIC SPRINKLER WRENCH MAY BE USED TO ACHIEVE GASKET SEALING.

5. If desired, the sprinkler may be tightened up to an additional 180 degrees (1/2 turn) in order to align the sprinkler frame arms parallel with the pipe. **Maximum recommended torque is approximately 8 ft-lbs.**
6. Remove the sprinkler's protective cap before placing the system in service.

NOTICE: DO NOT USE THE SPRINKLER'S STANDARD METAL INSTALLATION WRENCH! INSTALL THE SPRINKLER BY HAND OR USE THE PLASTIC InstaSeal® WRENCH ONLY!

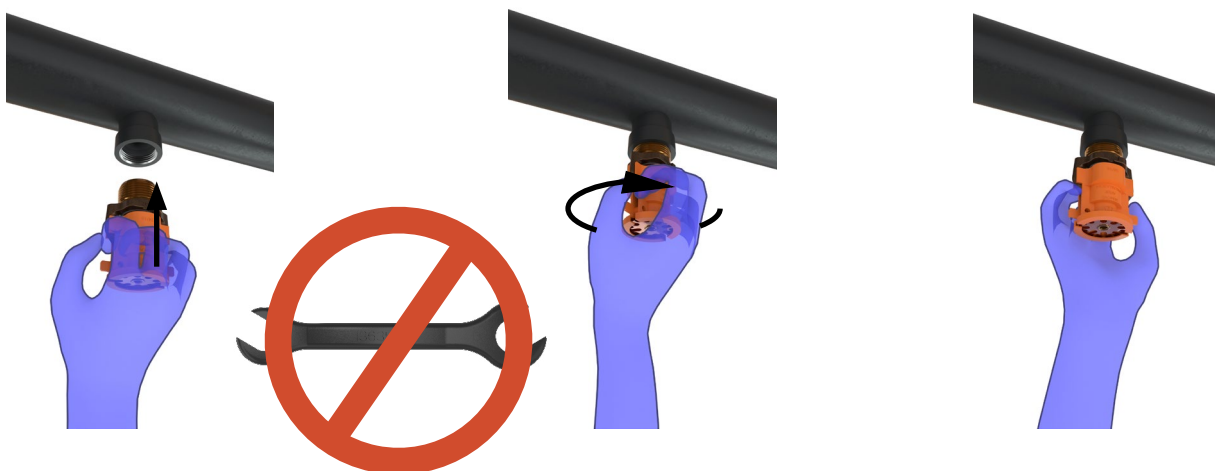


Figure 4: Sprinkler Installation



TECHNICAL DATA

InstaSeal®
WELDED SPRINKLER FITTINGS
MODEL IS-W2 1"

The Viking Corporation, 210 N Industrial Park Drive, Hastings MI 49058

Telephone: 269-945-9501 Technical Services: 877-384-5464 Fax: 269-818-1680 Email: techsvcs@vikingcorp.com

Visit the Viking website for the latest edition of this technical data page www.vikinggroupinc.com

5. GUARANTEE

For details of warranty, refer to Viking's current list price schedule or contact Viking directly.

6. INSPECTIONS, TESTING, AND MAINTENANCE

NOTICE

The owner is responsible for maintaining the fire protection system and devices in proper operating condition. For minimum maintenance and inspection requirements, refer to NFPA 25 for Inspection, Testing and Maintenance requirements. In addition, the Authority Having Jurisdiction may have additional maintenance requirements that must be followed.

Inspections

The InstaSeal® fittings should be inspected and the gasket replaced any time a sprinkler is removed.

Testing

Refer to NFPA 25 for Inspection, Testing and Maintenance requirements.

Maintenance

The gasket must be replaced whenever a sprinkler is removed.

Replacing the Gasket (see Figures 2 and 5)

1. Verify that the system has been removed from service. Refer to the system's documentation.
2. Remove the sprinkler.
3. Remove the old gasket using the pick tool.
4. Discard the old gasket.
5. Place new gasket (a) into the nozzle (b) with the white colored surface facing out and the chamfered edge going in first (the surface is colored to properly orient the gasket within the nozzle) then place the nozzle into the outlet (c) as shown.
6. Line up the insertion tool on the gasket surface ensuring the contact is uniform.
7. Press straight on the insertion tool (d) until it contacts the mechanical stop fully seating the nozzle onto the welded fitting.
8. Remove the tool and install a new sprinkler.

Image is representative only for illustration purposes.

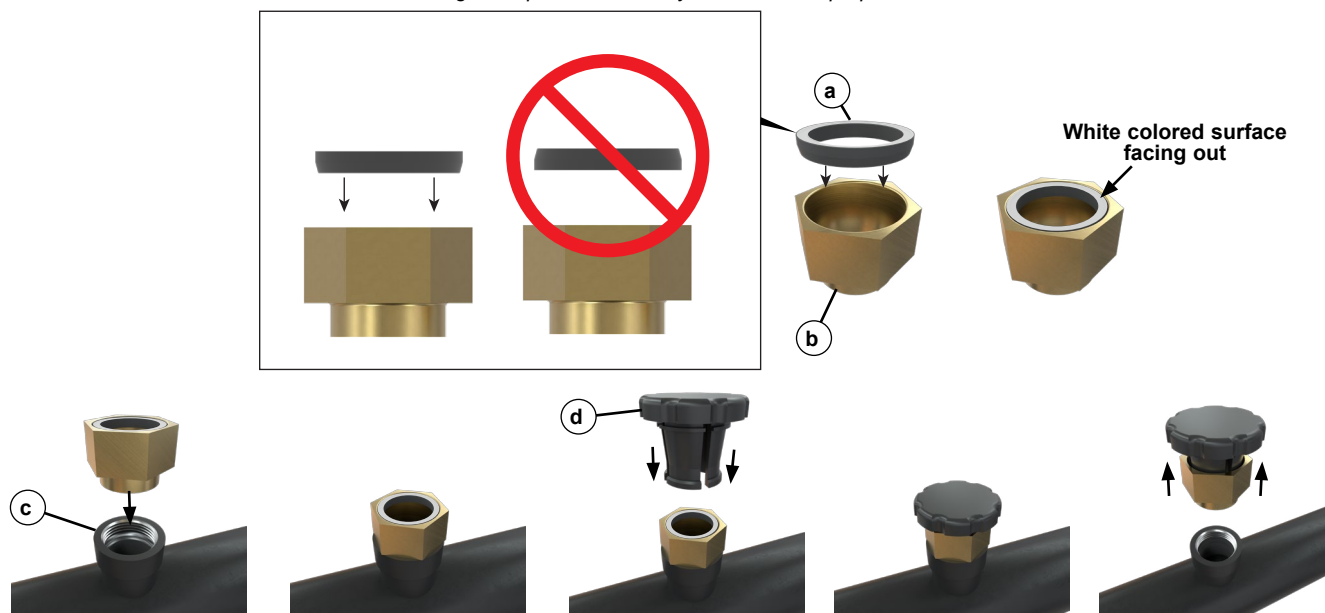


Figure 5: New Gasket Installation